

Floor plans



Ground floor

170 sqm LFA



1st floor

542,1 sqm LFA



2nd floor

917 sqm LFA



3rd floor

940 qm LFA



4th floor

947 sqm LFA



5th floor

938 sqm LFA | 8.5 sqm terrace



6th floor

929 sqm LFA | 16.1 sqm terrace



7th floor

910 sqm LFA | 14.8 sqm terrace



8th floor

887 sqm LFA | 16.3 sqm terrace



9th floor

837 sqm LFA | 23.6 sqm terrace



10th floor

843 sqm LFA | 18.7 sqm terrace



11th floor

831 sqm LFA | 27.9 sqm terrace



12th floor

781 sqm LFA | 58.2 sqm terrace



13th floor

753 sqm LFA | 31.3 sqm terrace



14th floor

696 sqm LFA | 60.2 sqm terrace



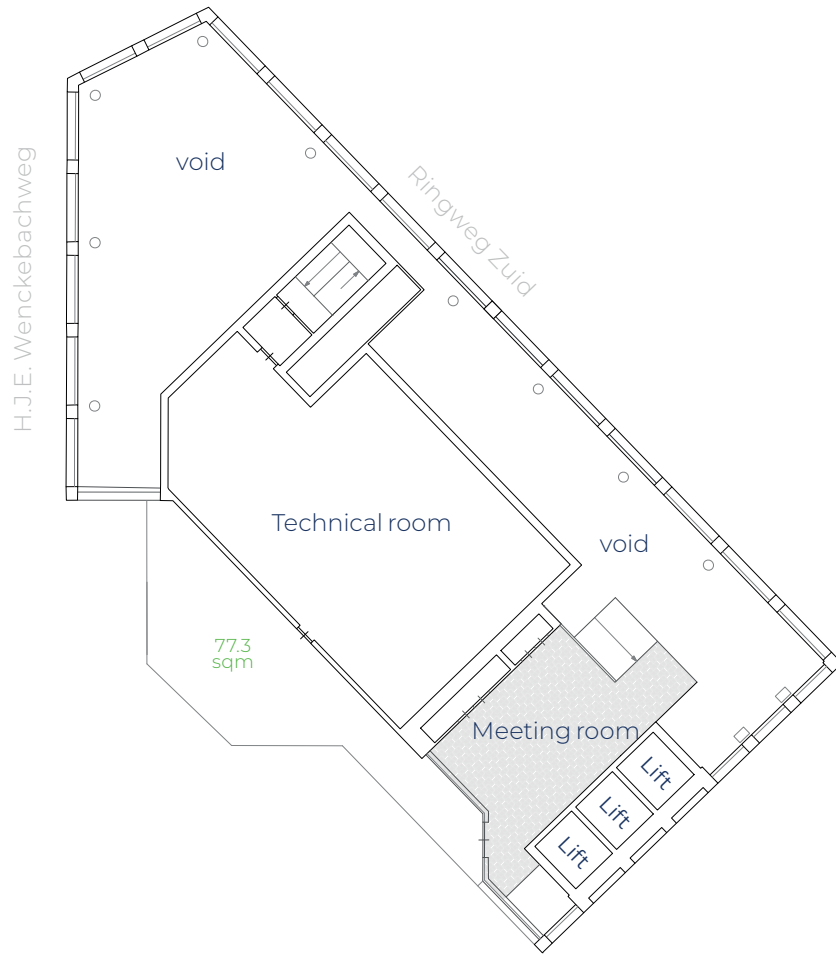
15th floor

478 sqm LFA | 63.3 sqm terrace



16th floor

60 sqm LFA | 77.3 terrace



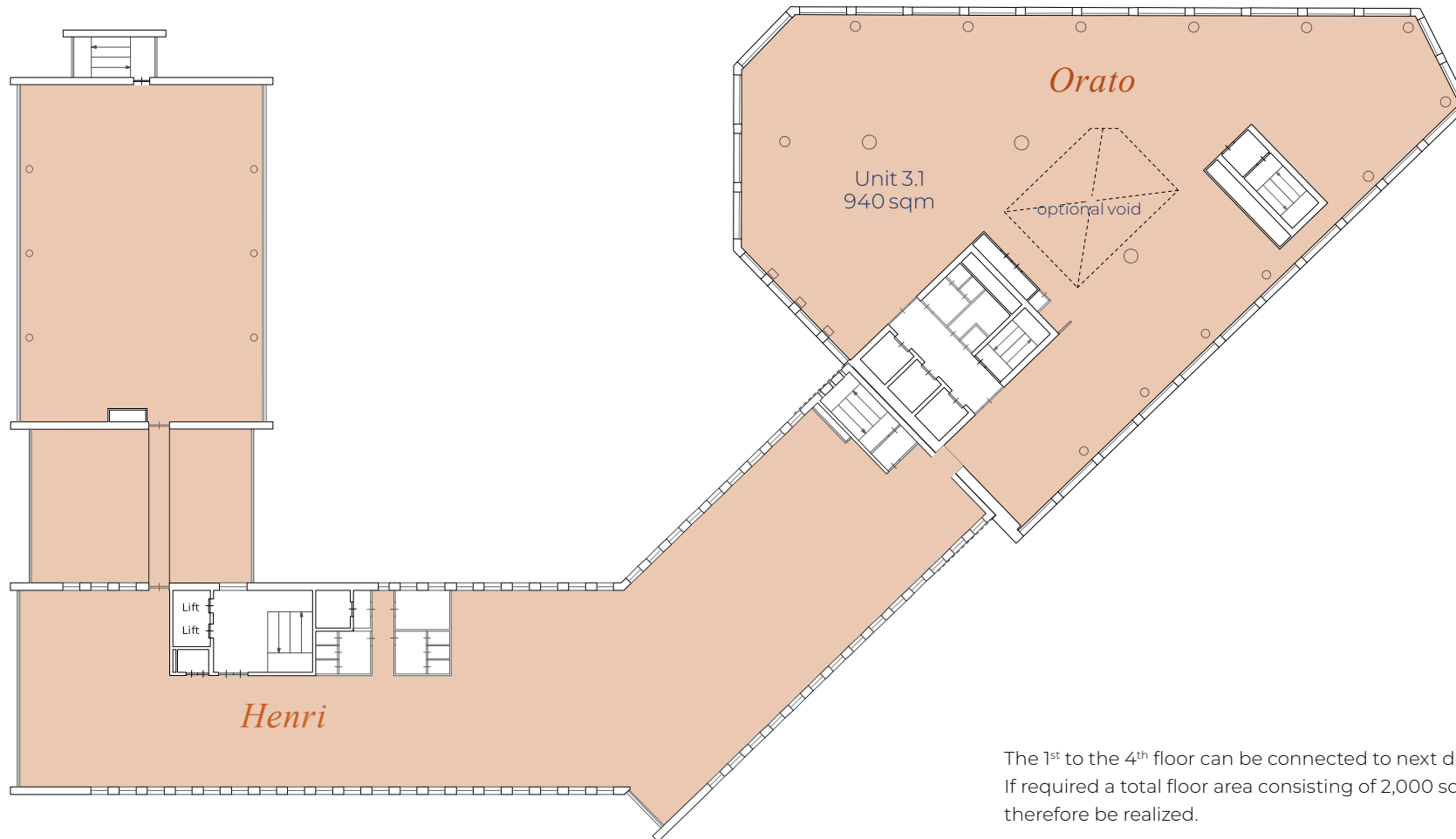
Floor extension

Orato & Henri



Example of connecting floor

3rd floor



The 1st to the 4th floor can be connected to next door building Henri.
If required a total floor area consisting of 2,000 sqm LFA can therefore be realized.

A ZADELHOFF DEVELOPMENT

Thibaut Goede
thibaut.goede@zadelhoff.nl
+31 (020) 573 3800